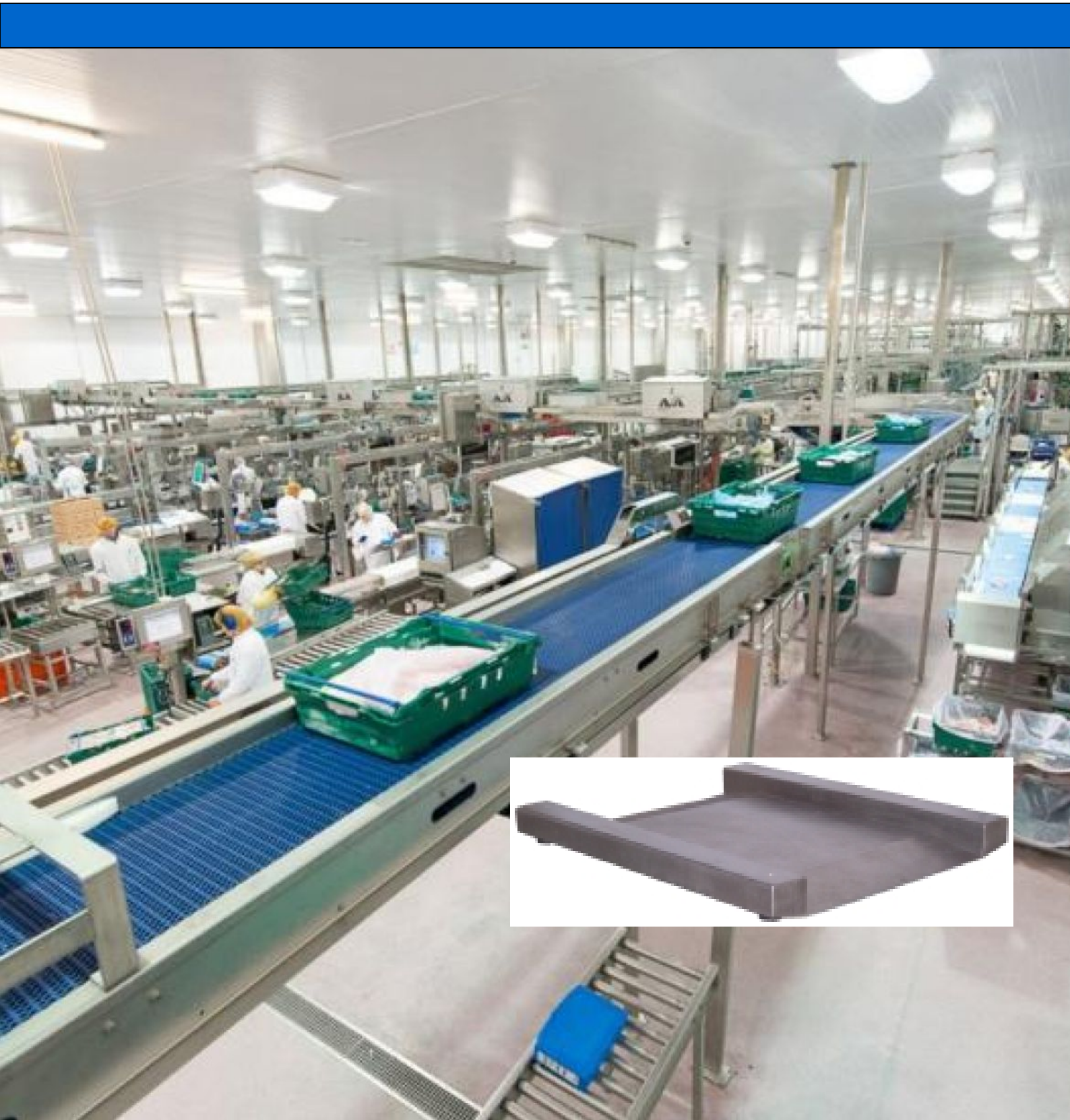




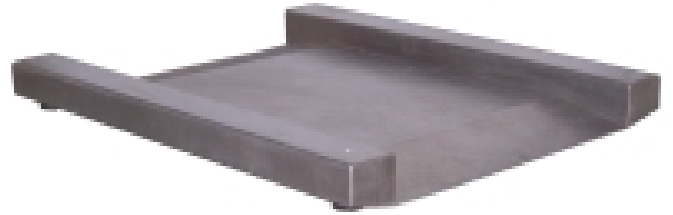
Stainless Steel Drive Through Platform



EC

Features

- All stainless steel construction
- Available with IP68 C3 load cells
- Ultra-low profile with integral ramps
- Optional ATEX load cells available



Specifications

Model	Maximum Capacity (kg)	Footprint (mm)	Platform Dimension (mm)
DT-S- 7575	1000	1105 x 990 x 110	750 x 750
DT-S-1010	1000	1400 x 1240 x 110	1000 x 1000
DT-S-1212	1000	1600 x 1400 x 110	1200 x 1200

Specifications subject to change without notice

